

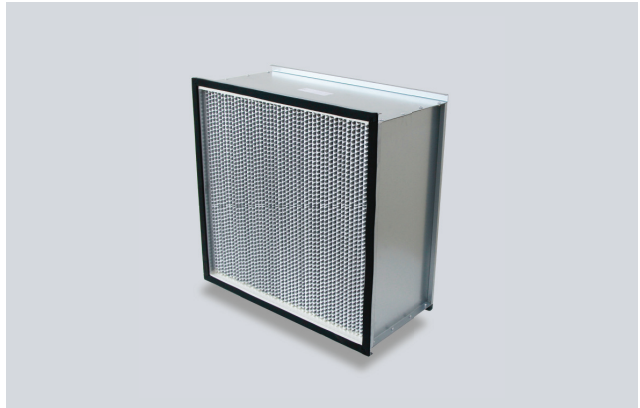
Aero Bio HEPA - Deep Pleated Bio HEPA Filters

Aero Bio HEPA filters are deep pleated aluminium separator filters with efficiencies ranging from H10/E10 to H11/E11 grades. The filters comes in wood and metal constuctions. Box type or flange type filters are available.

Aerofil Models

Aero Bio HEPA

Deep pleated HEPA filters
 Available in H10 & H11 grades
 Metal or Wooden frame
 Single, Double or No Header versions



MEDIA FEATURES AND TECHNICAL DETAILS

Filter Media

AERO BIO HEPA filters are manufactured from continuous length superior quality micro glass fiber paper media available in various efficiency grades from H10 to H11. The filter media is moisture resistant and fire retardant. Anti-microbial treated papers are also available for special applications. The uniform and closed pleat filter pack grants a high crossing surface to hold the very fine dusts.

Filter Frames

The standard frame construction includes fire retardant Wood Particle Board, Galvanized steel (16,18 or 24gauge) and anodized aluminium.

Sealant & Gaskets

The pleated media pack is encapsulated into the filter frame utilizing a two part high density urethane elastomer. A flat profile neoprene gasket or a one-piece seamless urethane gasket is used to ensure a leak free seal to the filter housing.

Media Separators

In AERO BIO HEPA filters, the pleated media is evenly and accurately positioned by corrugated aluminium separators having hemmed edges to add strength and to protect the media pack.

Filter Testing

The finished filters undergoes a thorough quality checking .They are scan tested individually to ensure a leak proof performance and each filter posses the label showing the scan test result on it. We have testing facilities as per EN 779 : 1822 Standard. Testing of filters can be done accord ing to customer's request.

Selection Chart ▼

AERO BIO HEPA Filter Size (mm)	Rated Airflow @ 150 Pa (CMH)		AERO BIO HEPA Filter Size (mm)	Rated Airflow @ 150 Pa (CMH)	
	H10	H11		H10	H11
Size: 610 x 610 x 292	3400	3230	Size: 592 x 592 x 292	3400	3230
Size: 610 x 610 x 150	1700	1600	Size: 592 x 592 x 150	1700	1600
Size: 305 x 610 x 292	1700	1600	Size: 292 x 592 x 292	1700	1600
Size: 305 x 610 x 292	850	800	Size: 292 x 592 x 150	850	800

● Final Pressure Drop - 500 Pa ● Maximum Operating Temperature / Humidity - 90 ° C / 90% ● Contact factory for non-standard size's information

All data are average indicative values with usual manufacturing and testing tolerances. We reserve the right to modify performance data without prior notices due to the constant technical improvement.

© Copyright: Every effort has been made to ensure that the information contained in this publication is accurate at the time of publishing. We assumes no responsibility or liability for typographical errors or omissions or for any misinterpretation of the information within the publication and reserves the right to change without notice.

